

The Durisol logo is rendered in a white, stylized, cursive font with a registered trademark symbol (®) at the end. It is positioned in the upper left quadrant of the page, set against a dark green background that features a faint, repeating pattern of the product's acoustic panels.

*Durisol*®

DURISOL.COM

# MASH TL-3 CRASH TESTED NOISE BARRIER PRODUCT GUIDE

FIRST-OF-ITS-KIND GROUND-MOUNTED ABSORPTIVE NOISE BARRIER  
SYSTEM CRASH-TESTED TO MASH TL-3 CONDITIONS

---

MASH TL-3 IMPACT LOADS

---

INTEGRATED PRECAST BARRIER

---

NOISE ABSORPTION

---

MODULAR DESIGN

---

CUSTOM FINISHES

Durisol® completes MASH (Manual for Assessing Safety Hardware) crash tests for our systems so that we have the peace-of-mind knowing they are going to hold up when they are needed most and aren't going to fail in real world scenarios.

As dictated by AASHTO (the American Association of State Highway and Transportation Officials), impact speed and angle represent the worst practical condition which is traditionally set at 85th percentile level. Passenger vehicles selected to represent 2nd and 90th percentile.

### AASHTO MASH TL-3 CRITERIA

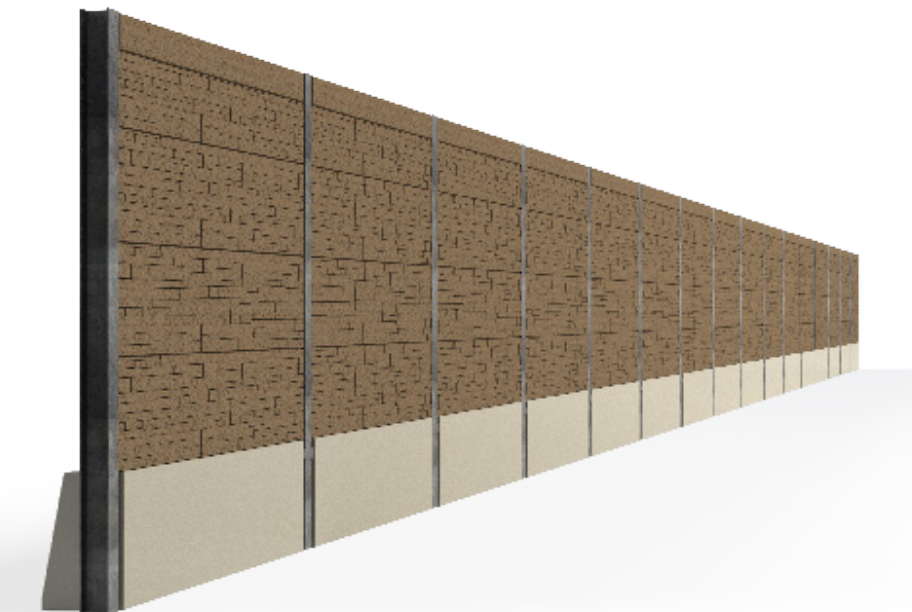
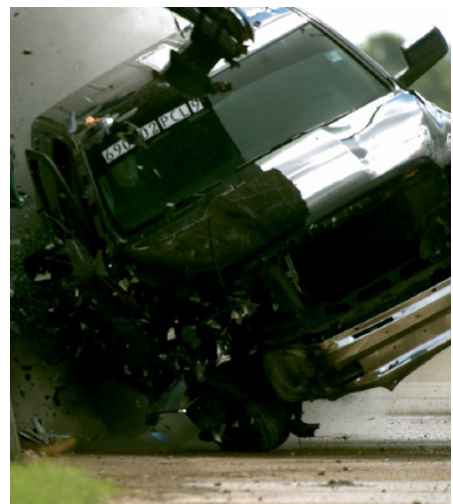
Criteria	AASHTO MASH
<b>Vehicle</b>	1100 kg (2425 lb) Small Car 2270 kg (5000 lb) Pickup
<b>Speed</b>	100 km/h (62 mph)
<b>Impact Angle</b>	Small Car 25° Pickup 25°
<b>Test No.</b>	Small Car 3-10 Pickup 3-11



### INTRODUCING: DURISOL® MASH TL-3 CRASH TESTED SYSTEM

Durisol® MASH TL-3 System is a modular absorptive ground mounted noise barrier system with an integrated precast concrete crash railing.

- 39" (1,000mm) high precast steel reinforced concrete single slope traffic barrier with proprietary connection to the noise barrier post
- W-10 (W250) post ground mounted post design
- Overall crash tested height of soundwall system installation above pavement was 17.3' (5.273m), however, designs can vary.





MARKING IMPACT ZONE

## WHAT IS DURISOL®

Durisol® is the proprietary name of a durable, lightweight and cementitious/wood composition product. It is made of chemically neutralized and mineralized organic softwood shavings which are specially processed to an acoustically engineered size and are bonded together under pressure with Portland cement.

The material is sound-absorbent, non-combustible, vermin and rot proof. Durisol is self-draining and highly resistant to weather exposure including: freeze-thaw, road de-icing chemicals and fungicides.

All Durisol noise barrier systems are engineered in-house, specifying the size for posts and the depth and diameter of footings. Standard steel posts or optional concrete posts can be accommodated.

The MASH TL-3 Noise Barrier System is available in the same range of existing Durisol standard colors and finishes. Custom colors and finishes available.

## STANDARD COLORS



1004B NATURAL



1082D TAN



1538B GREY



02589 TAN



09187 GREY



11988 BROWN

## FEATURES

- MASH TL-3 Crash Tested
- Double sided absorptive – with 0.80 NRC on both highway and residential
- Modular design
- Easy installation
- Lightweight
- Non-combustible
- Non-absorptive panels are an option as well

## TYPICAL APPLICATIONS

- Roads and Highways
- Residential Developments
- Rail Applications
- Industrial and Commercial sites
- Utility/Hydro Stations



\*This palette serves as a guide only;. Durisol's real-life texture will offer a variance in color. Color appearance also varies depending on time-of-day, light reflectance, etc.

### MASH TL-3 CRASH TEST 3-10 (SMALL CAR) SUMMARY

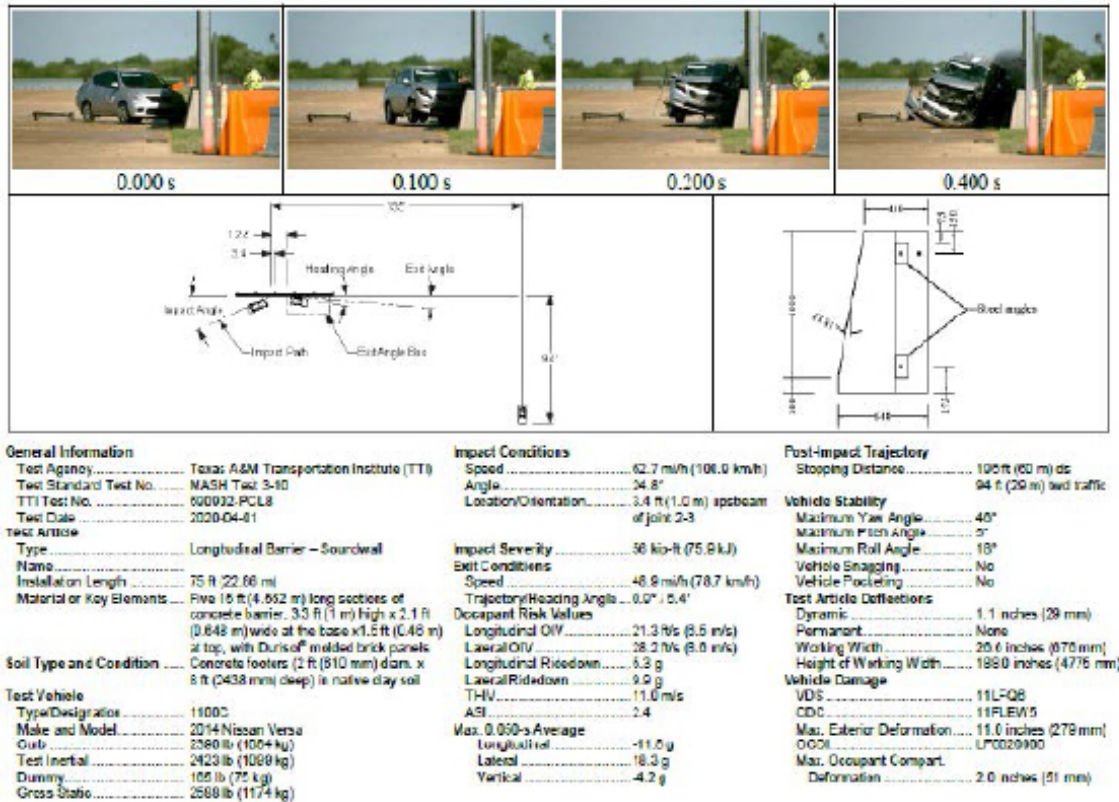


Figure 5.7. Summary of Results for MASH Test 3-10 on Traffic Barrier with Soundwall System.

### MASH TL-3 CRASH TEST 3-11 (PICK-UP TRUCK) SUMMARY

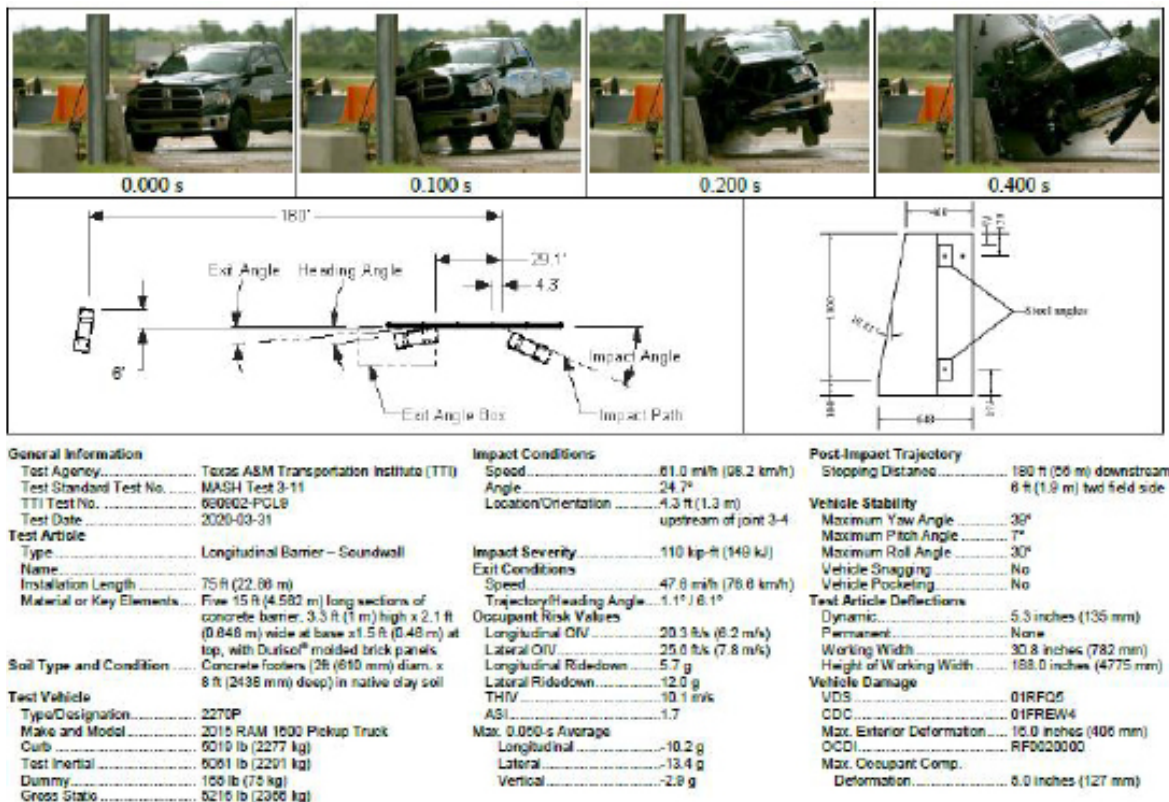


Figure 6.6. Summary of Results for MASH Test 3-11 on Traffic Barrier with Soundwall System.

Drawings and product details are for information and/or illustrative purposes only, and may vary.  
Please contact your local Durisol representative for the most current product information.



Durisol® is the market leader in the noise barrier wall industry. We manufacture and supply a series of unique panel and post wall systems - including our Durisol® precast sound absorption panels and transparent ACRYLITE® Soundstop sheets, as well as narrow footprint retaining walls and fire-rated barriers. Our first noise barriers were installed in Canada in 1977 and in the US in 1986 and are all still in service today. With over 40+ million square feet of wall installed to date, Durisol® noise barriers stop the noise of industrial warehouses, utility enclosure sites and urban infrastructure of all kinds right across North America.

**CANADA: 289-975-4402 | U.S.A.: 909-615-2037 | [DURISOL.COM](http://DURISOL.COM)**