

The background of the cover features a perspective view of a noise barrier system. It consists of vertical posts and horizontal panels. The top portion of the panels is a solid green color, while the bottom portion is a white perforated material. The sky is visible in the upper right corner.

Durisol®

DURISOL.COM

PVC NOISE BARRIER PRODUCT GUIDE

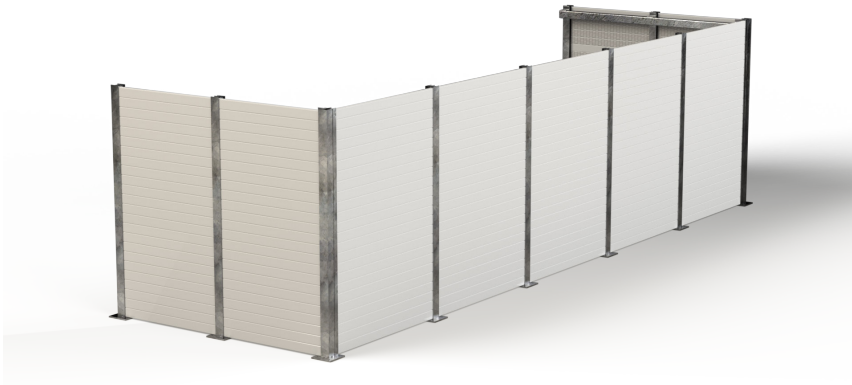
A LIGHTWEIGHT AND ECONOMICAL PVC POST-AND-PANEL NOISE BARRIER SYSTEM ENGINEERED FOR OPTIMAL ACOUSTIC PERFORMANCE.

—
LIGHTWEIGHT

—
DURABLE

—
NOISE ABSORBING

—
MODULAR DESIGN



WITHIN EARSHOT OF BUILDING NOISE

Often one of the last pieces of a new building or retrofit project is noise abatement. Essential to the building performance, rooftop mechanical and cooling equipment cause unwanted noise and need to be controlled.

Whether a quick-fix privacy screen or an enclosure designed to encapsulate noise-emitting equipment, we will help you to meet the necessary criteria to keep your project on track.

WITHIN EARSHOT OF ROAD OR RAIL TRAFFIC

Reducing the noise emissions produced by all modes of transportation, Ministries of Transportation and Departments of Transportation across North America install noise barrier walls along busy roadways and growing rail networks to address noise concerns for the public.

We have yet another noise wall design option for the transportation sector that responds to both weight concerns, installation constraints, and economical value.



FEATURES & BENEFITS

Lightweight panels

- Makes installation considerably easier.
- Reduces material weight requirements for roof and bridge designs.
- Reduces need for heavy equipment for installation.

Acoustic properties

- Single-sided absorptive.
- Reflective panels are also available.

Durability

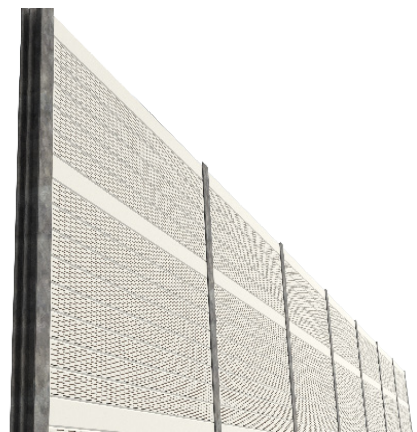
- Mineral wool and pvc does not rust or rot and is impervious to rain, snow, and ice.

Maintenance-free

- UV protected for all-weather conditions.
- Panels are free-draining.
- 50+ year lifespan.

Easy-installation

- Lightweight panels are handled by a single crew member and dropped into place.
- Tongue & Groove connection.



TYPICAL APPLICATIONS

- Industrial, Commercial, Institutional (ICI) Building Rooftops
- Roads, Highways & Bridges
- Rail
- Residential Developments

A TRUSTED BRAND

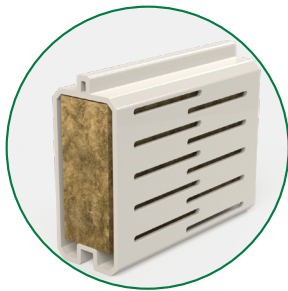
Adding to the diverse product portfolio of Durisol, comes another noise barrier product produced locally and delivered when you need it.

Lightweight and easy-to-install, our PVC noise walls are engineered to meet each site-specific noise abatement requirements. And depending on the criteria to be met, our noise reflective or noise absorptive panels give you options.

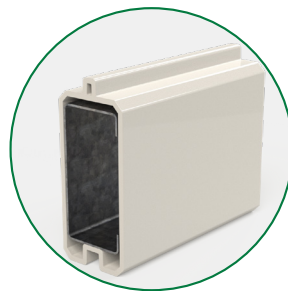
A TRIED & TESTED NOISE WALL OPTION

Our PVC noise walls are designed to meet the following codes and standards:

TEST NO.	DESCRIPTION
ASTM C423	0.95 NOISE REDUCTION COEFFICIENT (NRC)
ASTM E90-09	35 SOUND TRANSMISSION CLASS (STC)
ASTM E84	FIRE TESTING
ASTM D1435 - 2013	PHYSICAL OUTDOOR WEATHERING
ASTM G154 - 16	ACCELERATED WEATHER TESTING
ASTM D4226	IMPACT RESISTANCE
WIND LOADS	UP TO 48 PSF
CODE	DESCRIPTION
CAN/CSA Z107.9 - 00	CERTIFICATION OF NOISE BARRIERS
CSA S6:19	CANADIAN HIGHWAY BRIDGE DESIGN CODE
OPSS 760	CONSTRUCTION SPECIFICATION FOR NOISE BARRIER SYSTEMS
AASHTO LRFD	BRIDGE DESIGN SPECIFICATIONS, 9TH ED



PERFORATED



SMOOTH

STRUCTURAL & ACOUSTIC PANELS

Extruded Rigid PVC (RPVC) is a durable wall panel option for roadside to rooftop.

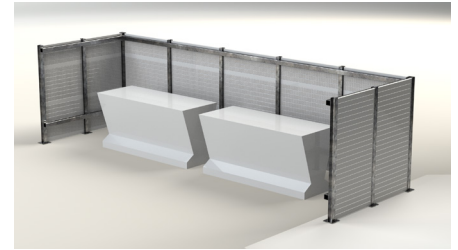
Durisol offers two types of acoustic PVC panels:

ABSORPTIVE PANELS

- Manufactured with slots on the front face of the panel and acoustic mineral wool enclosed within the absorptive panel.
- Proven and tested properties to consistently reduce noise when designed correctly.
- Noise reflective panels also available in addition to absorptive panels.

STRUCTURAL PANELS

- Structural panels contain a galvanized metal channel within it, where our acoustic panels will not.
- Structural panels provide strength to the wall by moving forces on the barrier to the vertical posts.
- The quantity of structural panels required is determined by specific wind loads and post spacing of each project.



DESIGN DETAILS

POSTS:

- Standard Steel posts.
- 10'-0" post spacing.

FOOTINGS:

- Adaptable to various footing types.

MOUNTING:

- Structure or ground-mounted designs
- Gravity-mounted design options available for roofs.

NOISE MITIGATION:

- Noise absorption and reflective panel options available.

ARCHITECTURAL FINISH:

- Standard white or bright white colours are available. Custom colours are also available.
- Smooth, flat finish is most common.

INSTALLATION:

- Precast base panel is required for all MTO projects.
- Once footings are prepared and posts are installed, panels are stacked until desired height is reached.
- Panels are constructed with a tongue and groove connection system.
- A top panel without a tongue connection is the final step of the wall construction.

Drawings and product details are for information and/or illustrative purposes only, and may vary.
Please contact your local Durisol representative for the most current product information.



As industry leaders, Durisol® models the highest standards of noise & retaining wall systems to serve the robust needs of the transportation, building and energy sectors across North America.

1-866-801-0999 | INFO@DURISOL.COM | DURISOL.COM