

Durisol®

PRECAST NOISE BARRIER PRODUCT GUIDE

SOUND-ABSORPTIVE WALLS MADE FROM OUR
INDUSTRY-RECOGNIZED DURISOL MATERIAL

LIGHTWEIGHT PRECAST

POST & PANEL SYSTEM

SOUND ABSORBING

95% RECYCLED MATERIAL

40+ YEAR SERVICE LIFE

INDUSTRY-LEADING NOISE WALL

Durisol has been leading the way in absorptive noise wall technology for over 70 years. With no wall ever replaced, this is the most reliable system for even the hard to obtain noise compliance requirements.

When specifying absorptive barriers, Durisol sound-insulating qualities reduces sound levels. In areas where noise is not the primary concern and privacy or security is more critical, the Durisol barrier can limit visibility to the public while offering a higher level of protection with a 2-hour fire resistance rating, protecting the owners assets, investments and ensuring the safety of the community.

Completely customizable to the wall design, we can reach required heights, lengths and unique design integrations.

40+
YEAR
SERVICE LIFE

A TRUSTED BRAND

Durisol® is the proprietary name of a durable, lightweight precast material. Composed of natural and recycled material, it is a more sustainable alternative to standard concrete. Made of chemically neutralized and mineralized organic softwood shavings which are specially processed to an acoustically engineered size. When bonded together under pressure with Portland cement, an absorptive panel is born.



A special blend of wood shavings & cement make up this unique precast product.



Watch our Durisol manufacturing tour on our **YouTube** Channel.

Applications

- Roads & highways
- Railway corridors
- Building enclosures or barriers
- Utility substations
- Residential developments
- Industrial & commercial sites

Features

- Noise absorptive of 0.70 - 0.90 NRC*
- Up to 46 STC Rating
- Lightweight & easy to install
- Non-combustible
- Vermin & rot-proof
- Freeze-thaw resistance

The trusted source for reliable community noise protection across projects ranging in size and complexity, Durisol's standard engineered noise wall systems are specified time and again for their versatility and high-quality finish that provides safety, security, and peace of mind.

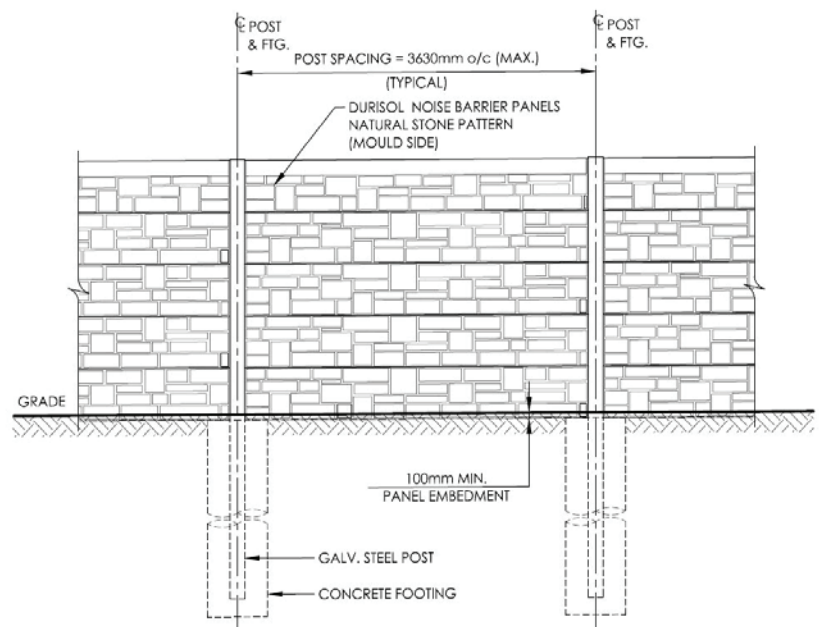
NB12 SYSTEM

The NB12 is a post and precast panel noise barrier system with standard centre-to-centre post spacing up to **12ft (3.63m)**. The NB12 system can be engineered for wall heights up to 33ft (10m) or more. Panel lengths accommodate up to 12ft (3.63m) long by 20in (0.5m) high.

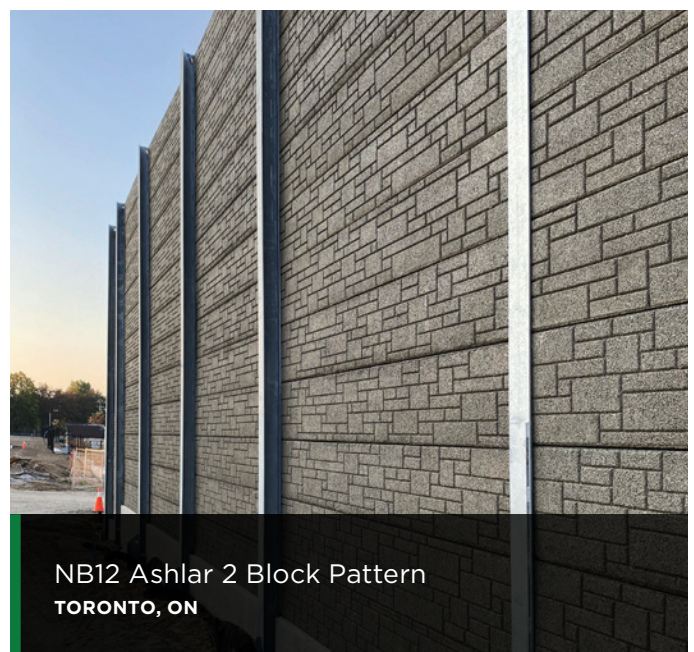
The standard NB12 panel system is sound absorptive on both sides with an optional integrated traffic barrier. It can also incorporate single sided absorptive or reflective retaining wall panels or transparent elements.

The NB12 system is flexible in many ways. It is ideal for slope conditions, directional changes, and difficult site access situations. Precast panels can easily be modified for short bays on site.

NB12
Simplified Technical Drawing



NB12 Custom Brick Pattern
HAMILTON, ON



NB12 Ashlar 2 Block Pattern
TORONTO, ON

NB15 SYSTEM

The NB15 is a post and precast panel noise barrier system with standard centre-to-centre post spacing being **15ft (4.56m)**. The NB15 system can be engineered for wall heights up to 43ft (13m) or more. Panel lengths accommodate up to 15ft long by 18-48in high.

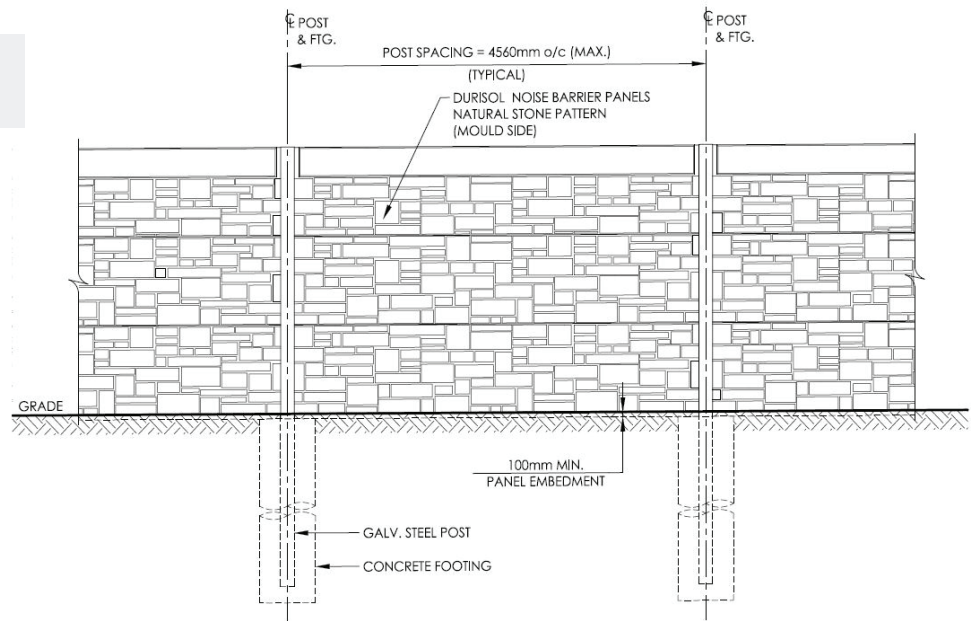
The standard NB15 system is noise absorptive on one or both sides. It can also incorporate transparent elements, and integrated retaining wall panels.

The NB15 system offers 20% fewer posts than the NB12 system, which can result in meaningful cost savings depending on soil conditions and project requirements.

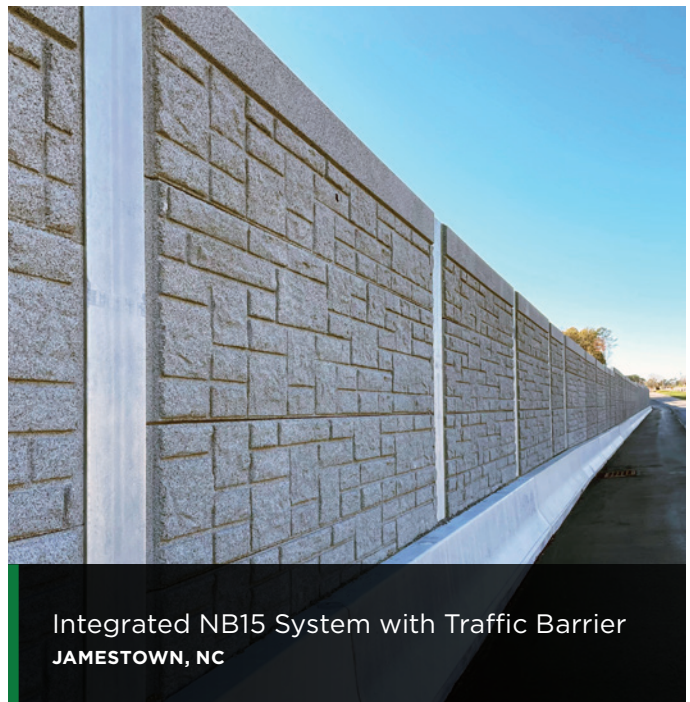


Durisol's NB15 system offers a **Durisol® Firestop System**. For more information, check out our **Fire Rated Barriers Brochure** on **Durisol.com**

NB15
Simplified Technical Drawing



Durisol® FireStop System utilizing NB15 Panels
TORONTO, ON



Integrated NB15 System with Traffic Barrier
JAMESTOWN, NC

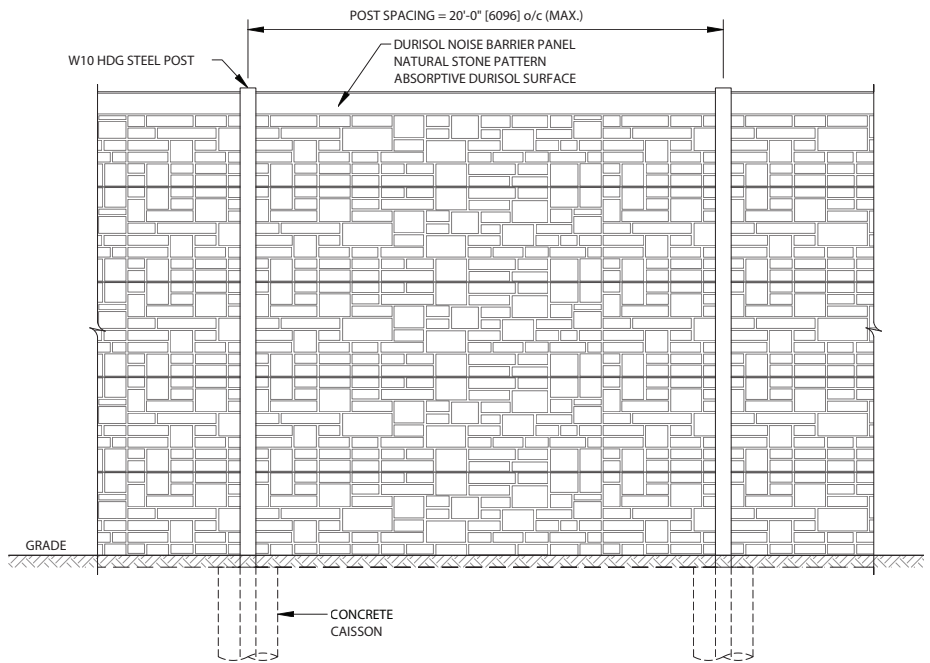
NB20 SYSTEM

Typical patterns consist of plain or natural stone. The NB20 system offers noise absorption on both sides of the wall.

This is the longest post spacing offering double sided sounds absorption. NRC 0.8 achievable on each side.

The NB20 system can allow for installation efficiencies where site conditions require long straight runs with minimal grade changes.

NB20 Simplified Technical Drawing



NB24 SYSTEM

The NB24 is a custom post and precast panel noise barrier system with customized bay spacing allowing for posts to be **24ft (7.3m)** centre-to-centre. Precast posts are an available option to wide flange HDG steel posts.

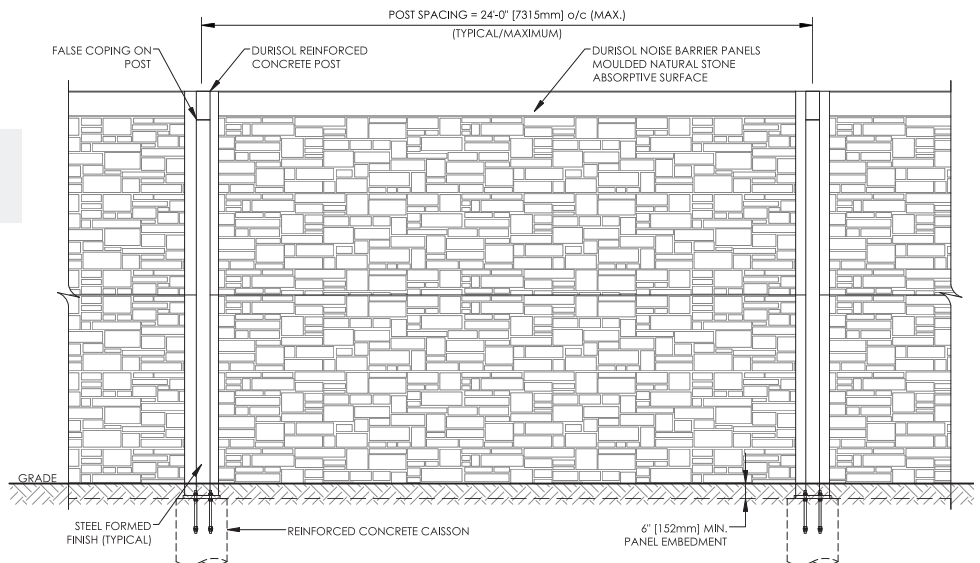
The NB24 system can be engineered for wall heights up to 36ft (11m) or more. Custom precast panels are available up to 24ft (7.3m) long by 84in (2.2m) high.

NB24 Simplified Technical Drawing

The NB24 system offers noise absorption on one side. It can also incorporate transparent elements, and integrate retaining wall panels.

The NB24 system offers the longest post spacing of Durisol's systems which can result in meaningful cost savings for projects including straight runs of the wall with minimal grade change.

The NB24 system is ideal for long straight runs of wall with minimal sloping grades where noise absorption is required on one side of the wall.



CUSTOM OPTIONS

With over 40 years of experience designing and manufacturing noise and retaining walls systems. Durisol has developed an impressive range of accessories and custom designs beyond our standard steel post and precast panel systems when a particular aesthetic needs to be achieved.

Post Accessories

1. Pier Caps
2. Pier Facings
3. End Caps
4. Post Facings



Functional Accessories

In addition to Durisol's wide range of standard textures and patterns, custom systems can be developed to suit almost any aesthetic or functional requirement. Durisol's experienced in-house team of engineers and professionals can assist designers, specifiers and owners at the project design stage to develop a custom solution where required.

The most common accessories include:

- Vehicle access gates
- Man doors
- Drainage openings and grates
- Fire hose access openings
- Flood control panels
- Pedestrian walkway entrances
- Custom feature sign
- Painted posts



Vehicle Access Gate & Door



The Durisol wall system can be integrated with **traffic barriers, retaining walls** and **transparent panels**.



Signature Panels

STANDARD PATTERNS & COLOURS

Our Durisol precast panels offer the same versatility as precast concrete. Choose from our standard patterns and colours below as a starting point, select from existing design inspiration, or work with our experts to create a look that has never been done before.

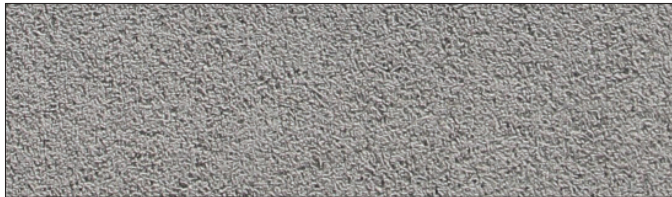
Patterns

Our standard patterns are based on our most basic molds available for the most efficient turnarounds.

Please contact us for your custom pattern inquiries.

Standard Panel Length Patterns

NB12 & NB15



PLAIN FLAT



NATURAL STONE



ASHLAR 2 BLOCK

Custom Panel Length Patterns

NB20



PLAIN FLAT



NATURAL STONE

NB24



PLAIN FLAT



NATURAL STONE



ROLLED ASHLAR

Colours

A collection of our most popular colours, the 6 swatches below are timeless options that blend seamlessly into the surrounding environment.



02589 TAN



1082D TAN



11988 BROWN



1004B NATURAL



09187 GREY



1538B GREY

Use this palette as a guide only.

Durisol's absorptive texture creates colour dimension and variation. It should also be noted that wall colours will vary during the day as they go from sun to part-sun to shade. Samples available upon request.



Let the experts at Durisol engineer
a PRECAST NOISE BARRIER system for
your next project.

Drawings and product details are for information and/or illustrative purposes only, and may vary.
Please contact your local Durisol representative for the most current product information.



QF108176-1 Mem



As industry leaders, Durisol® models the highest standards of noise & retaining wall systems to serve the robust needs of the transportation, building and energy sectors across North America.

1-866-801-0999 | INFO@DURISOL.COM | DURISOL.COM